

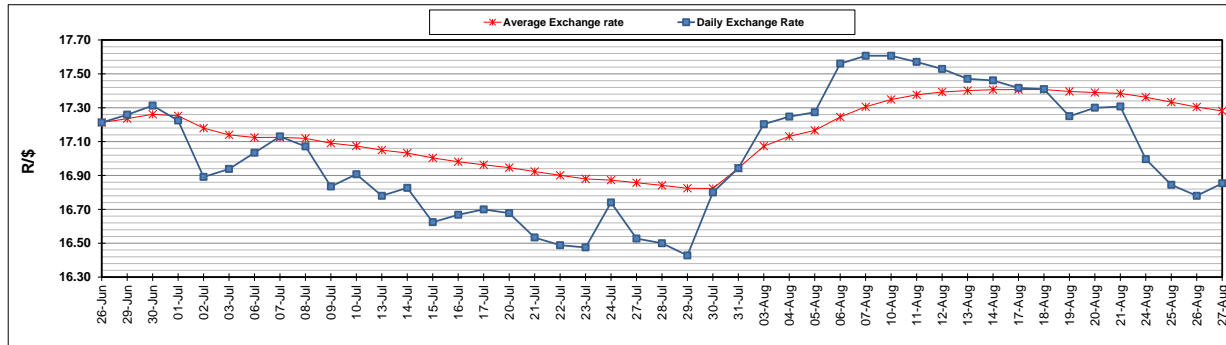
	PETROL 95 ULP	PETROL 93 ULP & LRP	DIESEL 0.05%	DIESEL 0.005%	ILL. PAR.
GAUTENG PUMP PRICE (SA c/l) AS FROM 05/08/2020	1,517.000	1,488.000	-	-	-
WHOLESALE PRICE (SA c/l) AS FROM 05/08/2020	-	-	1,348.560	1,352.960	742.828
SINGLE NATIONAL MAXIMUM RETAIL PRICE	-	-	-	-	934.000
BASIC FUEL PRICE - 27/08/2020 (SA c/l)	564.105	556.104	545.411	548.028	476.901
PRESS RELEASE CONTRIBUTION TO BFP 05/08/2020 - 27/08/2020 (SA c/l)	569.770	550.770	597.630	602.030	538.128
UNIT OVER/(UNDER) RECOVERY - 27/08/2020 (SA c/l)	5.665	(5.334)	52.219	54.002	61.227
AVERAGE BASIC FUEL PRICE 31/07/2020 - 27/08/2020	565.623	556.435	570.668	574.684	506.529
AVERAGE UNIT OVER/(UNDER) RECOVERY 31/07/2020 - 27/08/2020	3.397	(6.415)	20.212	20.596	25.749

### ANALYSIS MOVEMENT OF AVERAGE OVER/(UNDER) RECOVERY

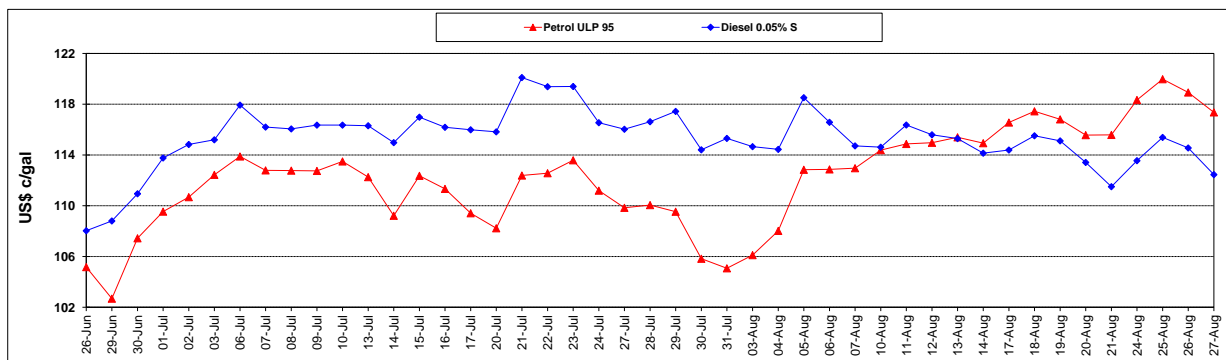
	PETROL 95	PETROL 93	DIESEL 0.05%	DIESEL 0.005%	ILL. PAR.
- MOVEMENT IN INTERNATIONAL PRODUCT PRICES	18.387	8.332	35.336	35.827	39.173
- MOVEMENT IN EXCHANGE RATE	(14.990)	(14.747)	(15.124)	(15.231)	(13.424)
AVERAGE UNIT OVER/(UNDER) RECOVERY 31/07/2020 - 27/08/2020	3.397	(6.415)	20.212	20.596	25.749

### R/\$ EXCHANGE RATE - (R/\$16.8535 - 27/08/2020)

#### EXCHANGE RATE USED IN BASIC FUEL PRICE



#### INTERNATIONAL PRODUCT PRICES OF BASKET USED IN BASIC FUEL PRICE



#### BASIC FUEL PRICE IN SA CENTS PER LITRE

